

Simulating the functionality of an IR remote control

Document number: PO-109-EN Version: 1.0 Date of publication: April 21, 2022

Introduction

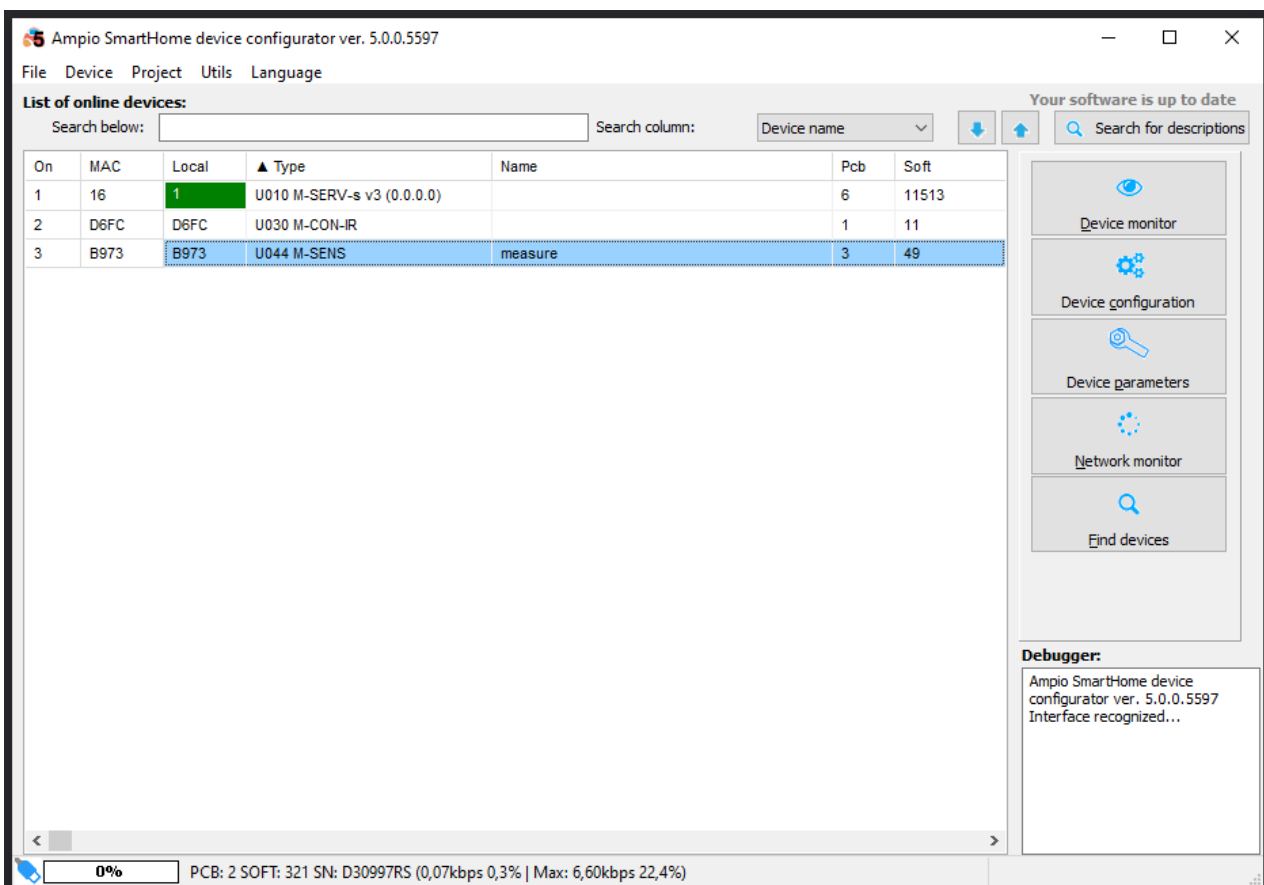
The Ampio System allows you to simulate the actions of IR remote controls (e.g. such that are used to control air-conditioning, or a TV) and to control them via the Ampio UNI App and other Ampio devices.

Modules that support the IR functionality:

- M-CON-IR
- M-SENS (PCB version 3, software 49 or higher)

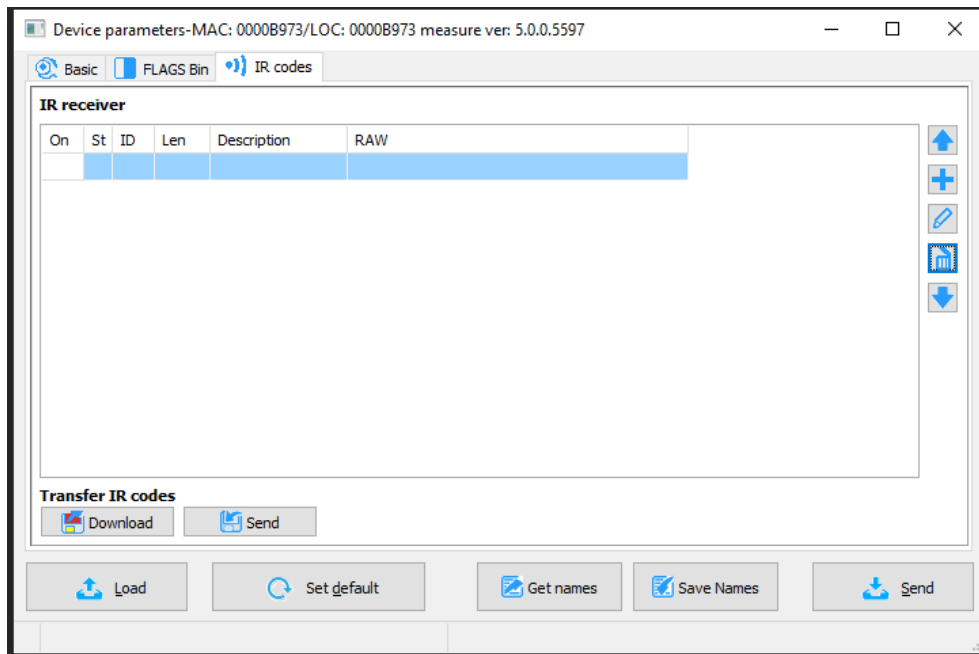
Configuration in the Ampio Smart Home configurator

From the devices list, select the M-CON-IT module (or M-SENS with the appropriate functionality).

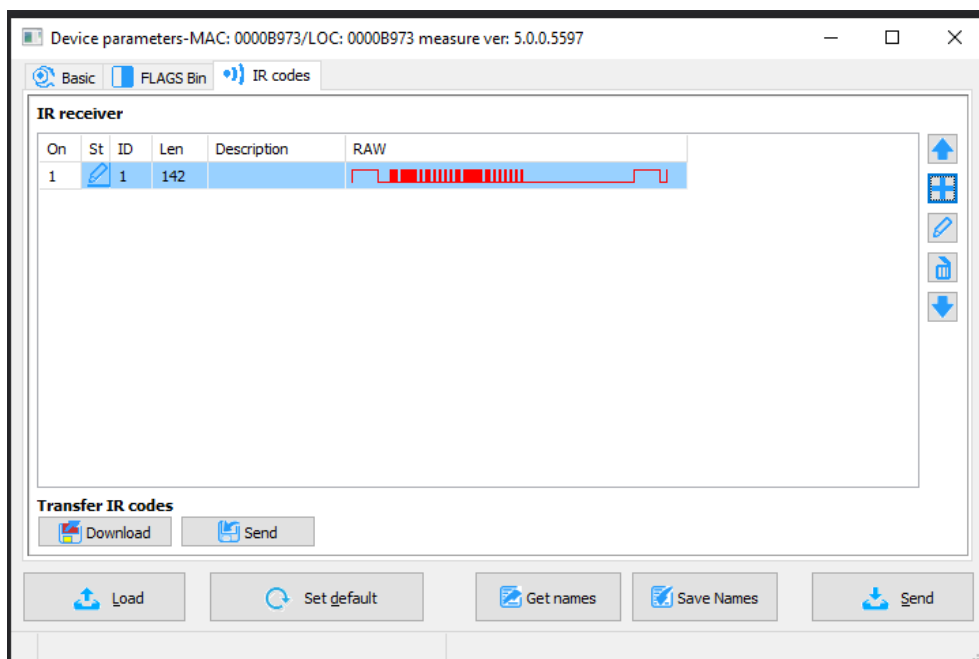


Saving codes in the module's memory

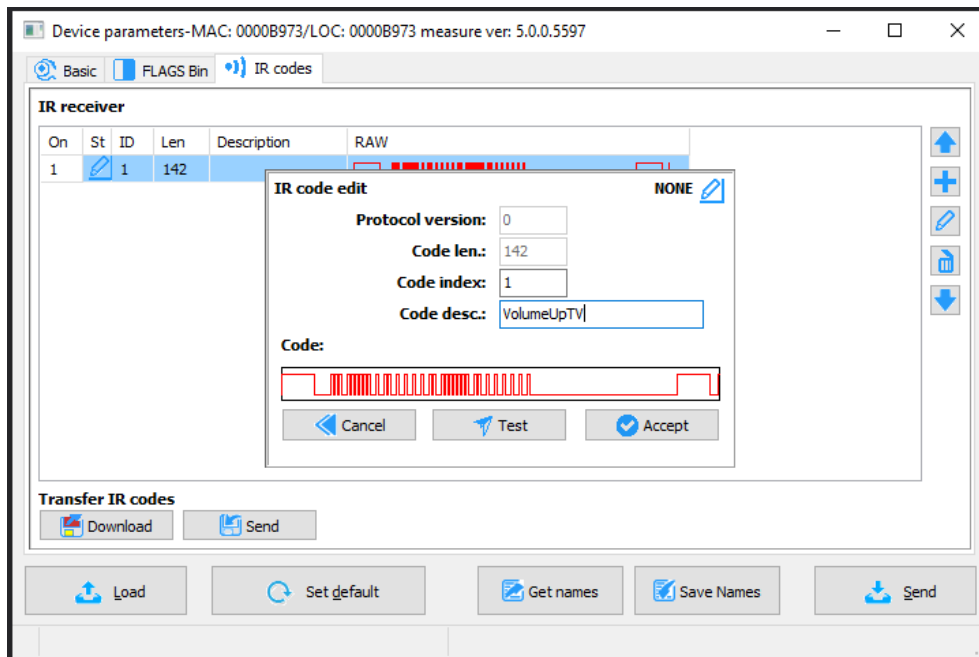
Go to *Device parameters* and open the *IR codes* tab.



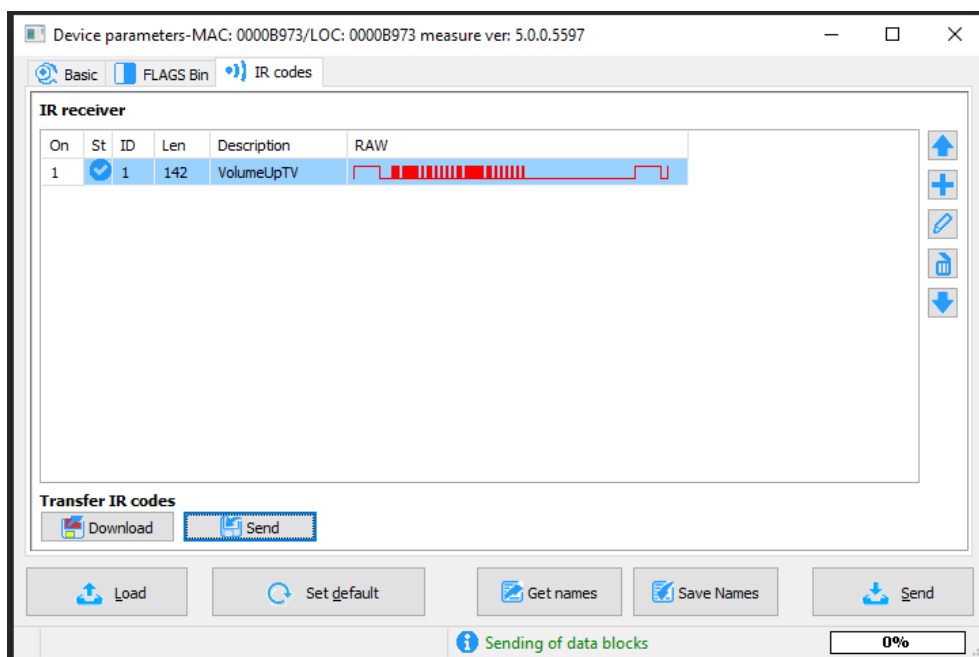
Buttons visible on the right side are for adding and deleting IR codes. If you hover over a button, information describing the functionality of the button will be displayed. In order to add a new code, click +. From this moment, the module will wait for one minute for a frame to be added. Direct a remote control towards the module and press the intended button. When the module receives an IR frame, it will be displayed on the list. The table contains the following columns: *Item number*, *Status*, *ID*, *Length*, *Description* and *RAW* (physical path of the signal).



After clicking on the *Edit from the list* button, you can name the frame or test it.

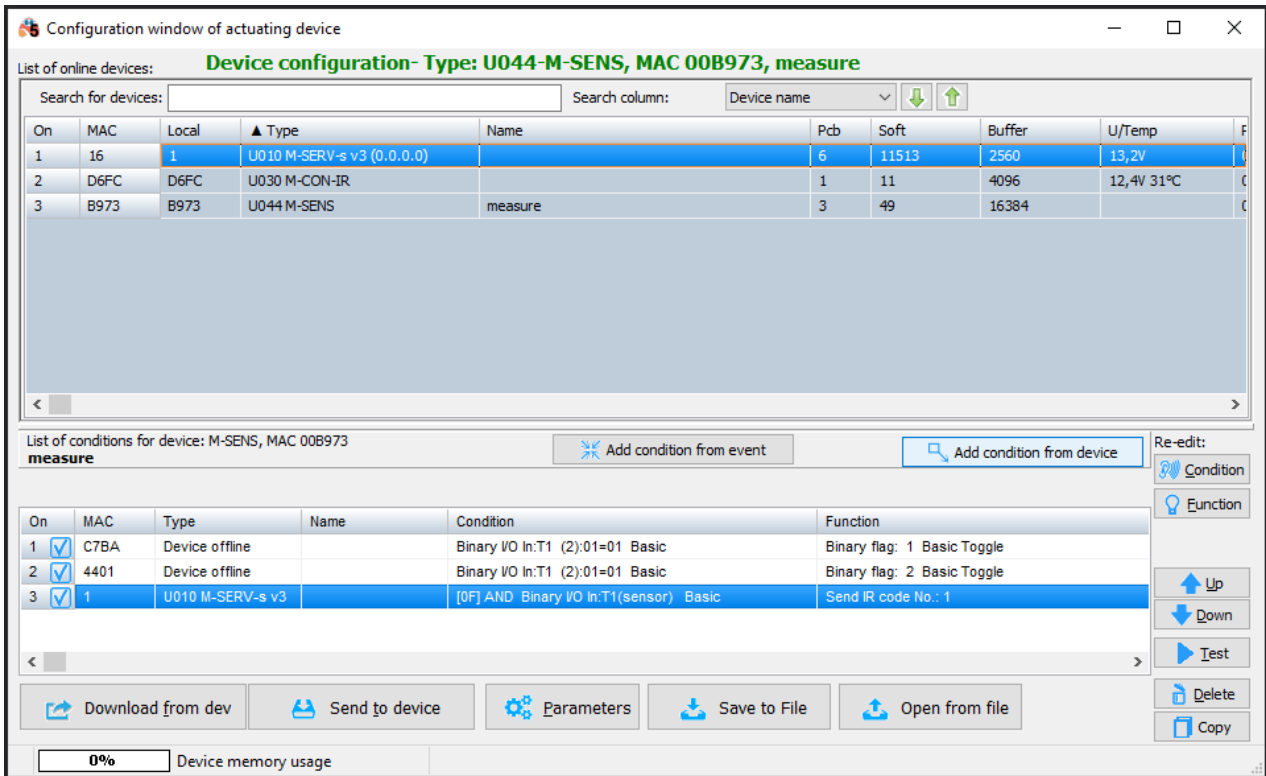


The next step is to confirm by clicking *Accept*. In order for the code to be saved in the device’s memory, you have to click *Send* in the *Transfer IR codes* field. Once that is done, the status icon will look as follows:

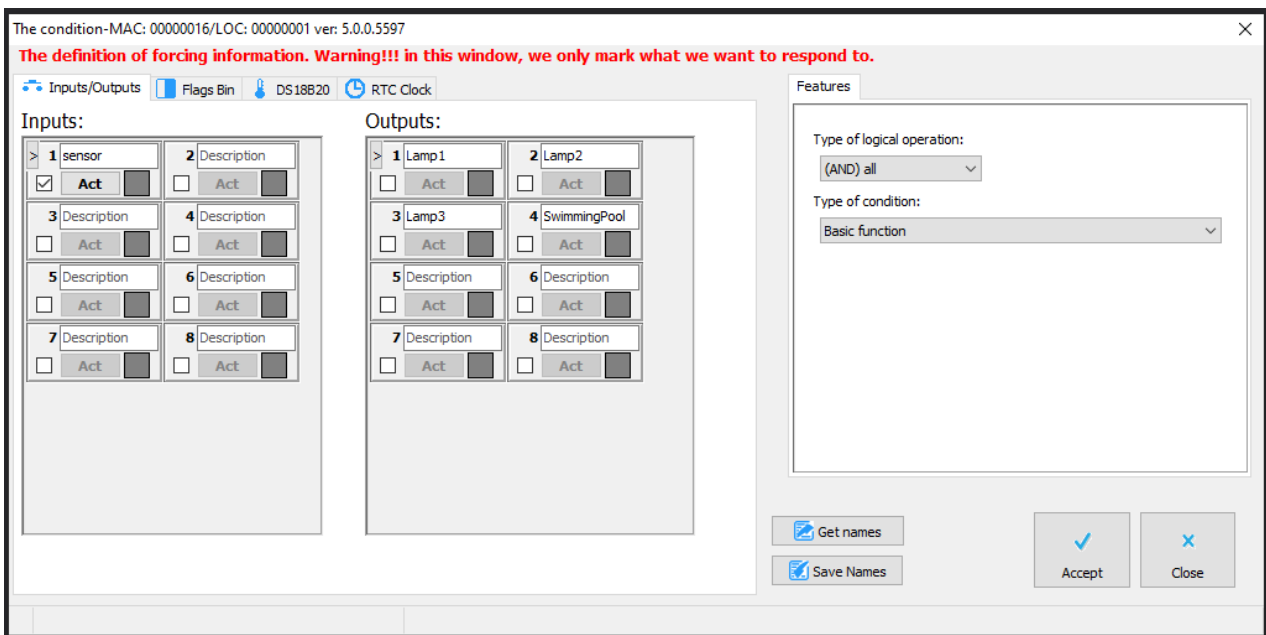


Creating a condition that results in sending an IR code

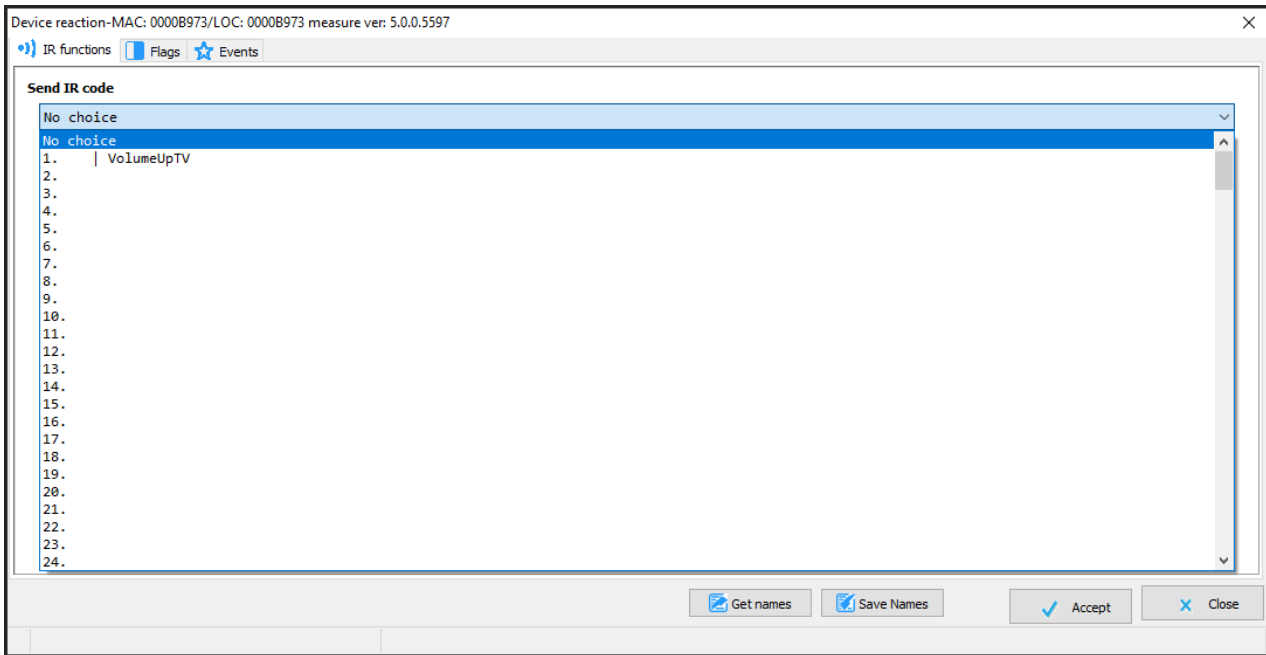
The saved IR codes can be accessed when creating conditions. In that way, you can, for example, send a frame after activating an input in M-SERV-s, or any M-DOT. Let’s start from creating a standard condition. The device that you will configure is, e.g. M-SENS, and the input device M-SERV-s. Then, select *Add condition from device*.



Select the right input and confirm.



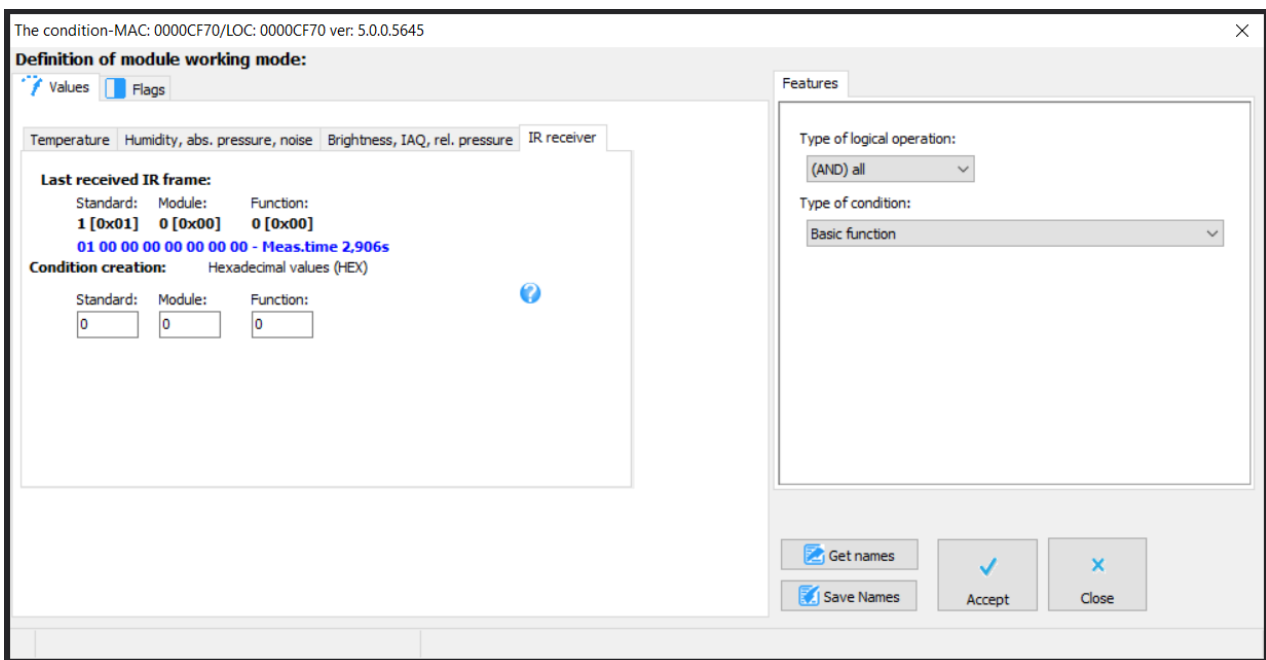
In the M-SENS device reaction window, select the *IR functions* tab and choose the code to be sent from the list.



At the end, send the new list of conditions to the device. From now on, when the M-SERV input gets activated, an IR frame fetched from the remote control will be sent from the M-SENS module.

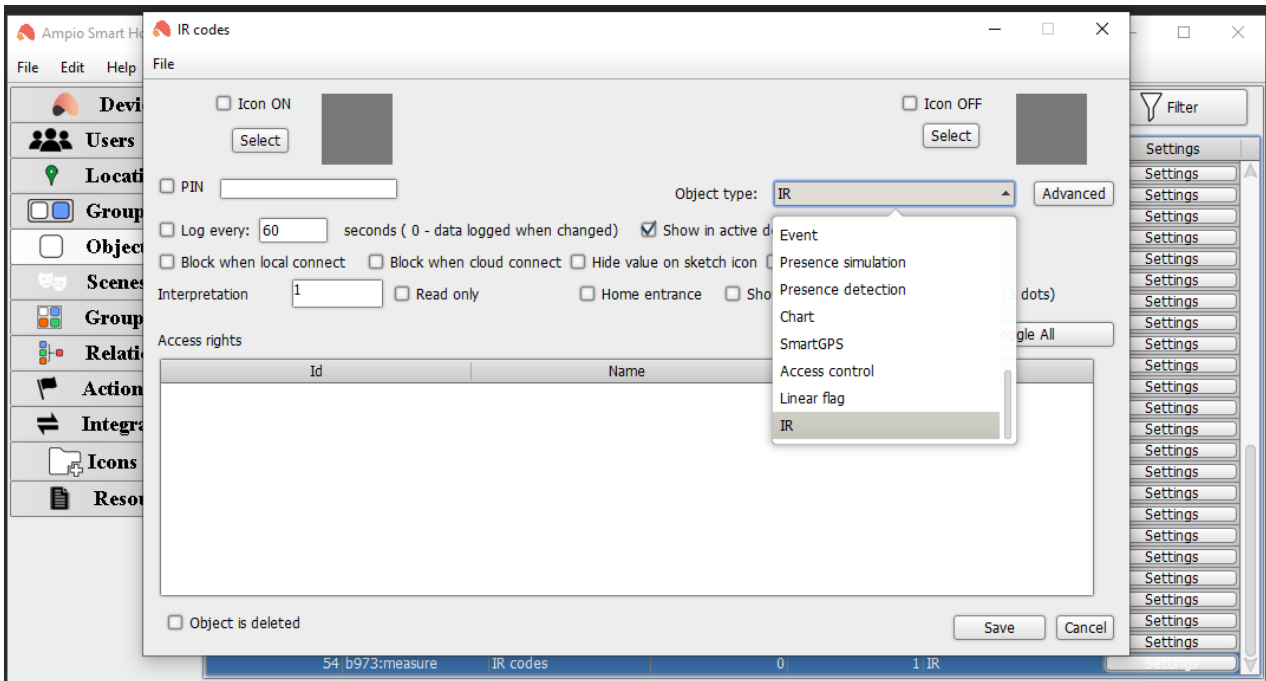
Adding a code when creating a condition

This option is available only for the M-SENS device. In order to add a remote control code as a condition source, start from creating a standard condition from M-SENS. Open the *IR receiver* tab. When you hover over the ? icon, you will see a hint regarding creating such a condition. After sending the new frame to the remote control, data will be highlighted in colour and the countdown will start afresh. Once you copy the values over to the 3 bottom fields, you can confirm the remote control condition (copy the hexadecimal values shown in square brackets).



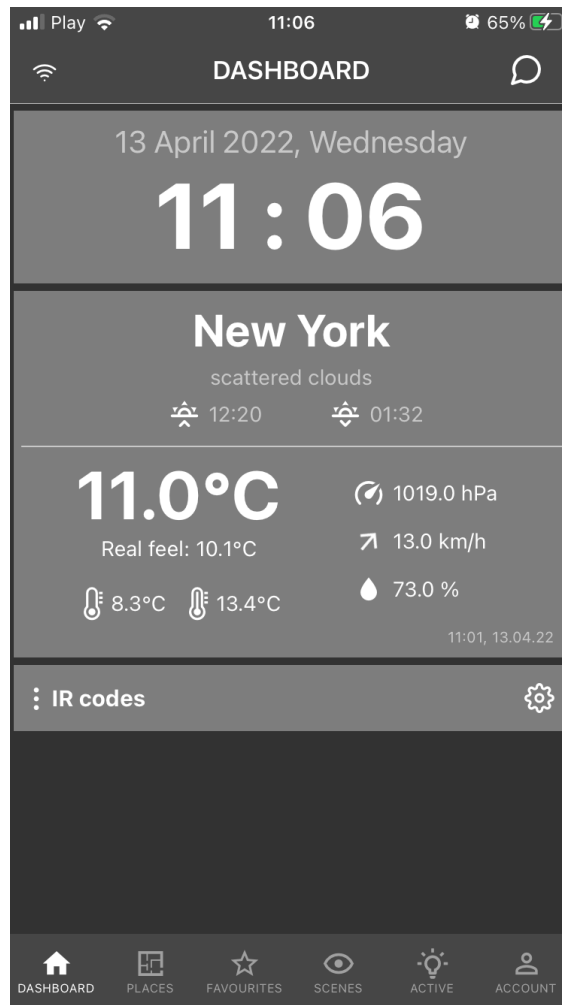
Adding codes in the Ampio UNI mobile application

In order to enable adding IR codes from remote controls via the mobile app, add an IR type object through the Smart Home Manager application first.

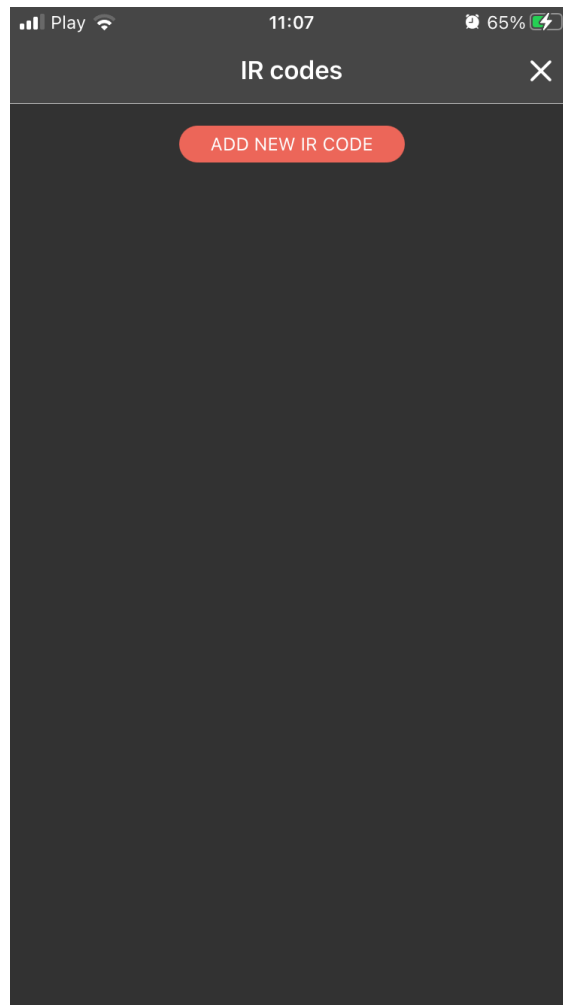


Then, place it in the desired group (an instruction on the subject of SHM objects configuration: [Objects - configuration in the Smart Home Manager](#)).

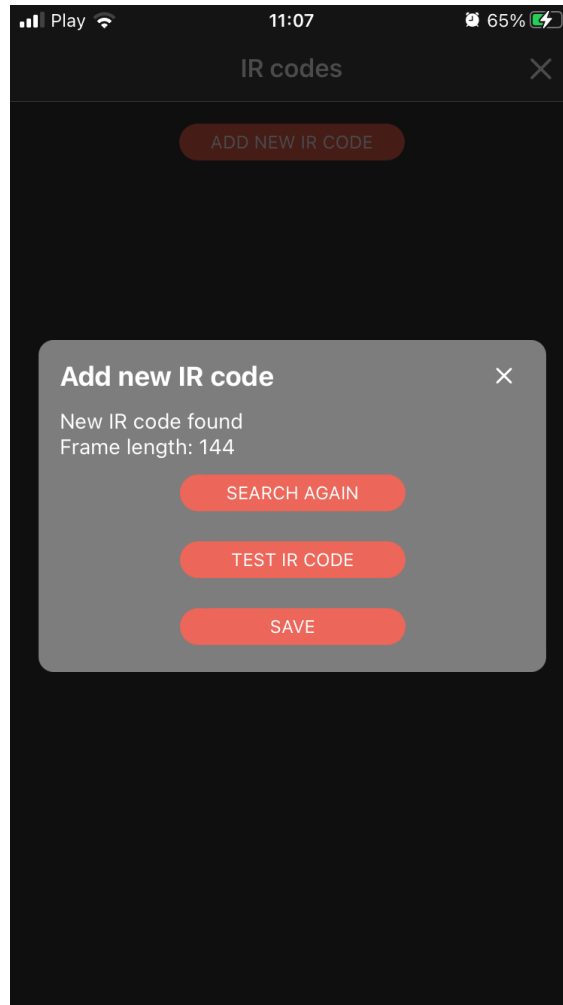
After logging into the Ampio UNI app, you will see a new object responsible for the IR codes.



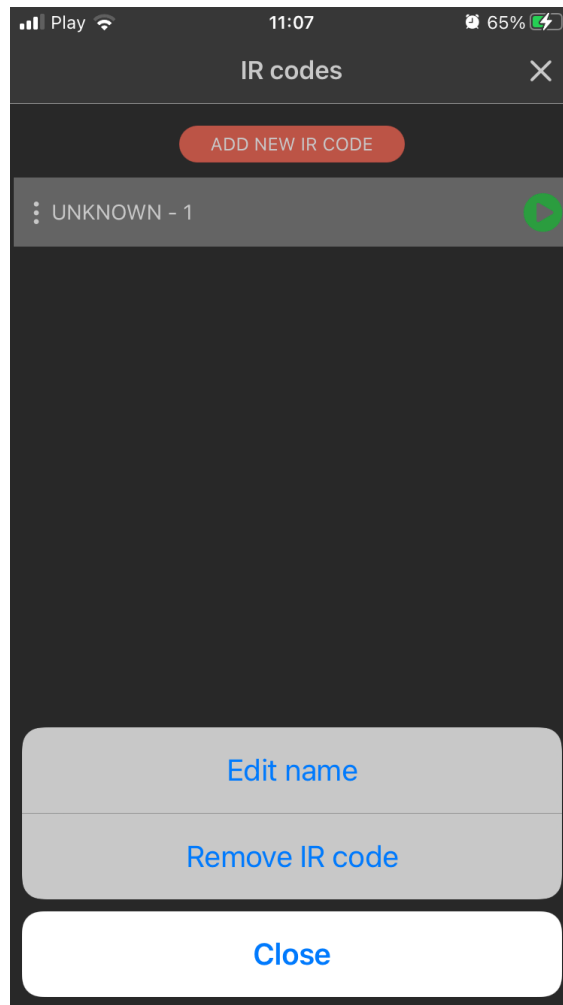
Open the Object's menu by clicking on the gear icon. There, you can add the first code.



Once the receiver registers the code, another menu related to the new code will be displayed.



The saved IR codes can be activated by clicking on the Play button. They can also be named, or removed from the list when you click on the three dots on the left.



This method allows you to simulate the IR remote controls with the use of the mobile app.